

A person wearing a blue and white racing helmet with 'TURBOFLEX' and 'ONLEVEL' branding is using a teal and black power tool. The person is wearing a dark blue jacket with 'ONLEVEL' and 'TURBOFLEX' logos. The background is dark with blue lighting. The overall scene is a promotional image for a power tool brand.

ONLEVEL

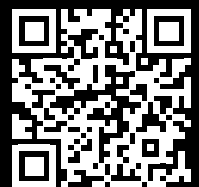
A decorative graphic consisting of several parallel diagonal stripes in shades of blue and white, positioned in the lower right quadrant of the page.

## TURBOFLEX-GUIDE

EVERYTHING YOU NEED TO KNOW ABOUT  
THIS NEW GLASS BALUSTRADE SYSTEM

## DO YOU WANT TO SAVE EVEN MORE TIME IN YOUR PROJECT?

Use ONLEVEL STUDIO to configure your project in a few clicks.



## INTRODUCTION

**If your railing installations are dragging due to unpredictable jobsite conditions, repeated rework, or systems that don't adapt on-site, you're not alone.**

Installers and project managers alike are losing time, budget, and client trust over products that weren't designed for real-world conditions

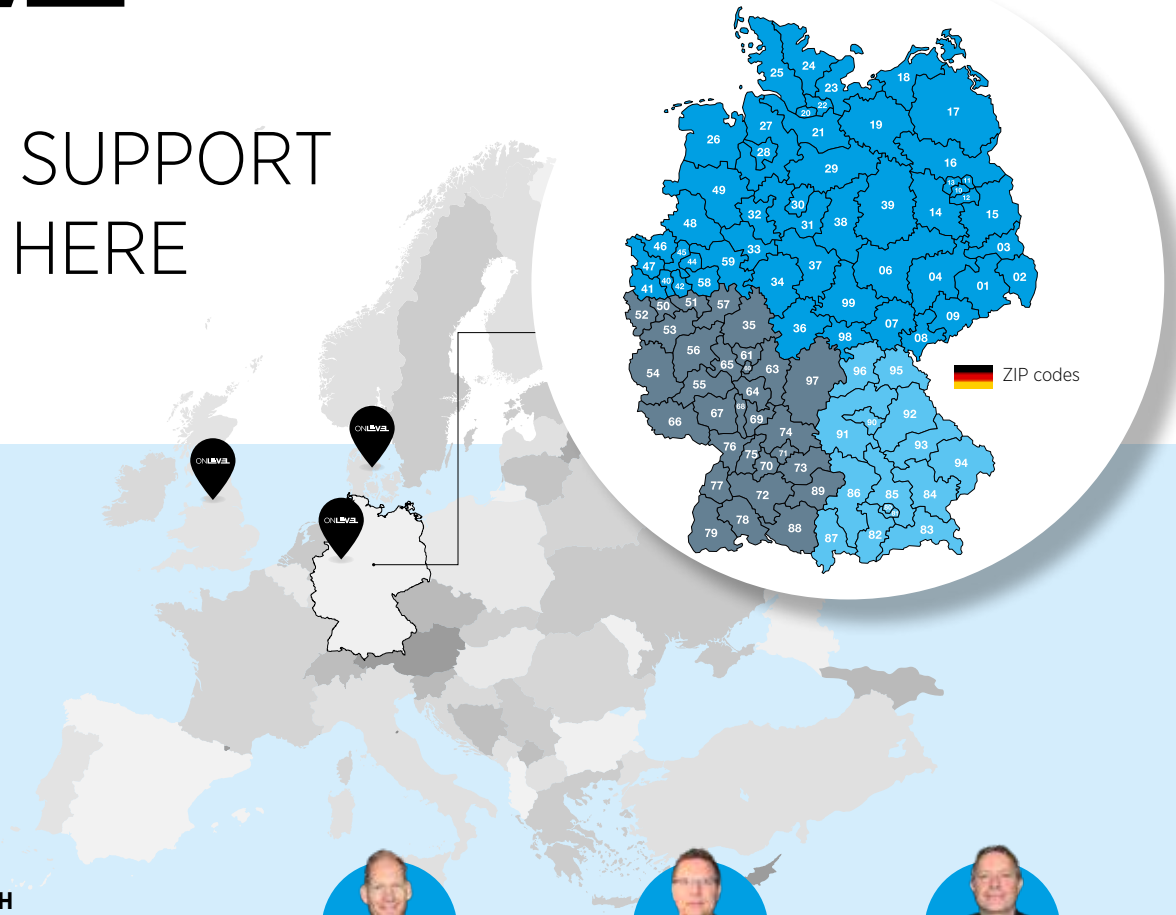
At ONLEVEL, we've worked with thousands of professionals dealing with these exact frustrations. Since 2016, we've engineered railing systems that are not just high-quality, but also simple to install, even under challenging conditions.

In this guide, we'll walk you through TURBOFLEX, our most advanced adjustable glass system, designed to make installation faster, more adaptable and easier to plan your project accurately.

By the end of this guide, you'll understand how TURBOFLEX works and how it compares to traditional systems. You'll learn when it's the right solution to deploy, the pricing and what to consider before your next install.

A white, stylized handwritten signature, likely "Iwan", is positioned above the man's head.

## EXPERT SUPPORT STARTS HERE



### ONLEVEL GmbH

Budberger Straße 5  
46446 Emmerich am Rhein  
Germany

**Tel.:** +49 (0)2822 975 14-0

**Website:** onlevel.com

**Mail:** info@onlevel.com

### ONLEVEL Nordic Aps

Gunnar Clausens Vej 26B  
DK-8260 Viby J  
Denmark

**Tel.:** +45 69 14 38 00

**Website:** www.onlevel-nordic.com

**Mail:** sales@onlevel-nordic.com

### ONLEVEL Ltd.

Lancashire, OL7 0QN  
United Kingdom

**Tel.:** +44 0161 804 9500

**Website:** onlevel-uk.com

**Mail:** info@onlevel-uk.com



### Niels Wildschut

Sales Manager

Mail: niels@onlevel.com

Tel: +49 151 14 16 26 56



### Erwin Stegenga

Field Sales

Mail: erwin@onlevel.com

Tel: +31 62 23 44 169



### Christophe Bardet

Field Sales

Mail: christophe@onlevel.com

Tel: +33 64 24 23 652



### Marco Bleffert

Field Sales

Mail: marco@onlevel.com

Tel: +49 151 14 16 23 99



### Frederik Vennemann

Field Sales

Mail: frederik@onlevel.com

Tel: +49 171 7234678



### Manuel Zant

Field Sales

Mail: manuel@onlevel.com

Tel: +43 676 3640481

#### Area in Germany (Zip codes)

35000 – 35999

50000 – 57999

60000 – 79999

88000 – 89999

97000 – 97999

#### Area in Germany (Zip codes)

01000 – 09999

10000 – 19999

20000 – 34999

36000 – 39999

40000 – 49999

58000 – 59999

98000 – 99999

#### Area in Germany (Zip codes)

80000 – 87999

90000 – 96999

# INDEX

<b>1.</b>	What is <b>TURBOFLEX?</b>	<b>6</b>
<b>2.</b>	How TURBOFLEX works: <b>fast installation guide</b>	<b>9</b>
<b>3.</b>	What makes TURBOFLEX <b>different</b> from traditional glass railing systems	<b>15</b>
<b>4.</b>	Is TURBOFLEX <b>certified?</b>	<b>17</b>
<b>5.</b>	TURBOFLEX <b>vs</b> Flex-Fit	<b>18</b>
<b>6.</b>	When is TURBOFLEX <b>not the best fit</b> for your project?	<b>20</b>
<b>7.</b>	When is TURBOFLEX <b>the right fit</b> for your project?	<b>21</b>
<b>8.</b>	Why installers are <b>switching</b> to TURBOFLEX	<b>23</b>
<b>9.</b>	TURBOFLEX <b>Delivery Time &amp; Pickup Options</b>	<b>25</b>
<b>10.</b>	What does TURBOFLEX <b>cost?</b>	<b>26</b>
<b>11.</b>	How to <b>order</b> TURBOFLEX	<b>29</b>
	<b>Meet our team</b>	<b>34</b>

# 1. WHAT IS TURBOFLEX?

**Installing glass railings shouldn't feel like a guessing game. But with traditional systems, you're often forced to make endless adjustments just to get a single panel lined up, risking misalignment, delays or even safety concerns.**

## **TURBOFLEX changes that.**

This innovative glass railing system is built to simplify your job, no rework and no trial-and-error. Instead of forcing you to adjust the system to the glass, TURBOFLEX adapts to the glass itself, automatically, right where it matters: at the point of contact.

## **Just plug, place, align, and lock. That's it.**

You get precise alignment, enhanced safety and refined aesthetics, all with a faster installation.

TURBOFLEX is designed to do one thing incredibly well: take the stress and uncertainty out of glass panel installation, whether you're on your first job or your fiftieth.

## **TURBOFLEX**



## WHAT ARE THE KEY BENEFITS?

TURBOFLEX was engineered with one goal in mind: to make glass railing installation dramatically easier, so that anyone can do it. Whether you're a precision-focused metalworker, a solo handyman, or managing a crew, TURBOFLEX adapts to your needs on-site. This isn't just another mounting system, it's designed for real people doing real work in real-world conditions. Here's how it delivers, no matter who's holding the tools.

### **FOR INSTALLATION COMPANIES**

Metal and installation businesses operate at the intersection of **precision, speed, and operational efficiency**. TURBOFLEX enhances all three:

- | Millimetre-perfect alignment with **±2° horizontal** and **±3 mm vertical** adjustability
- | Install safely from the user side
- | Fast installation so you can go to next project
- | Consistency across teams, even with junior or inexperienced mounters
- | No extra tools needed
- | Stress-free glass handling:
  - Gaskets stay flush despite minor angle variation
  - The pivoting mechanism eliminates point loading on the glass
  - Works with **16.76-21.52 mm** glass thickness
  - What you place is what remains: no after-installation adjustments needed
  - Reduced manpower due to simplified alignment

### **FOR GLASS PROCESSORS & DEALERS**

Your customers need systems that are **easy to specify, easy to trust, and operationally low-risk**.

### **TURBOFLEX delivers:**

- | A broad tolerance range, reducing complaints or returns
- | A system that installers love, boosting repeat orders
- | Simple, transparent value propositions for your sales team
- | Reduced liability through certified performance (**1.0 kN**)
- | Lower support overhead thanks to installation simplicity

## FOR HARDWARE DEALERS

Your business thrives on **reliable, frictionless solutions** that empower customers and differentiate your portfolio. TURBOFLEX delivers:

- | A product that “sells itself” because installation is universally simpler
- | A demo box that enables hands-on showroom experiences
- | Fewer technical queries: your customers succeed without complex guidance

### A differentiating product that positions your shop as future-ready

No matter who you are, whether expert or first-time installer, TURBOFLEX gives you one less thing to worry about on-site. It's designed to remove friction and boost your confidence at every step of the process.

## WHAT MAKES IT DIFFERENT FROM OTHER SYSTEMS?

Let's be honest: there's no shortage of glass railing systems out there: Q-Disc®, VetroMount, Defender 810, Balardo Core, all offer competent solutions. Each has its loyal base of installers. **So why does ONLEVEL claim TURBOFLEX is something new?**

### Because it is.

Of course, we could simply say “TURBOFLEX is the best”, but you deserve better than that. So let's break it down: clearly, transparently and practically, from an installer's point of view.

### WHAT PROBLEMS DOES TURBOFLEX FIX?

With traditional systems, adjusting the glass angle means adjusting the fixation itself, a process that's far more complicated in practice than it sounds.

- | **Heavy, oversized panels:** Large glass panels are difficult to handle with precision. The fixation is small and light, while the glass is heavy and awkward, making fine adjustments a challenge.
- | **Multiple fixation points:** A typical 1-metre panel may have three fixations. In theory, all should be adjusted at once to change the angle. In reality, adjusting one leaves the others resisting movement, slowing the process.
- | **Material tolerances:** Variations in delivered materials often prevent the system from functioning as intended.

On top of these issues, most systems share another critical flaw: adjusting the glass angle changes the way it contacts the fixation. A full contact area becomes just a narrow contact line. Over time, wind loads or line loads can cause the glass to shift, forcing costly re-adjustments.

With TURBOFLEX, the system **adapts to your glass**, right at the point of contact. You don't align the glass to the profile. **You align the glass exactly where it needs to sit.** Then TURBOFLEX locks onto it.

That single reversal changes everything: less stress, less time, fewer tools, and fewer things that can go wrong. The Engineering

## THAT MAKES IT WORK

Here's what makes TURBOFLEX fundamentally different:

### Internal Pivot Under the Gasket

Traditional clamps fix rigidly to the profile, often creating tension when glass angles deviate even slightly. TURBOFLEX includes a built-in pivot directly under the sealing gasket, allowing the clamp to rotate and follow the angle of the glass. Result? Always flush contact. No pressure points. No edge stress.

### Fixing Is Done From One Side and Safely

Installing on a rooftop or balcony? TURBOFLEX is fully accessible from the user-facing side. That means:

- | No scaffolding
- | No leaning over rail edges
- | No costly safety setups

### It's safer and it's smarter.

### FASTER BY DESIGN (NOT JUST BY CLAIM)

TURBOFLEX installations are faster than conventional systems.

Not because of magic, but because you eliminate:

- | The need to pre-level the profile
- | The back-and-forth to re-align glass
- | Time spent compensating for glass tolerances

**Place. Align. Lock. Done.**

TURBOFLEX simplifies what used to be a complicated, time-consuming installation. With its internal pivot mechanism and one-side access installation, it gives you the speed, precision, and control you need, without sacrificing safety or aesthetics.

Installed in just three minutes, it eliminates rework, stress points, and tool-heavy workflows. Turboflex changes how glass railing gets done. It adapts to your glass, your job site, and your schedule, whether you're a solo installer or managing a full crew.



## 2. HOW TURBOFLEX WORKS: **FAST INSTALLATION GUIDE**

Now that you know what TURBOFLEX is, let's walk through how the installation actually works. The best part? You won't need a truck-load of tools. That's part of the genius.

### ESSENTIALS YOU'LL NEED:



| **TURBOFLEX Mounting tool**

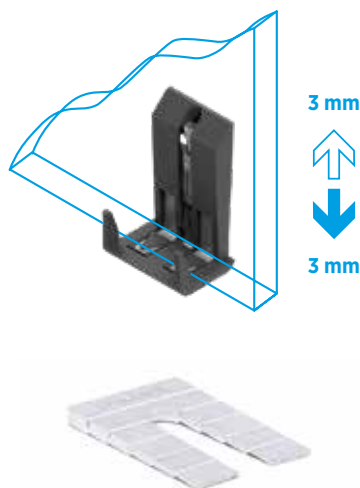
Ensures quick, secure fixing even in tight profile spaces.

| **TURBOFLEX Torque adaptor 6Nm**

Ensures every fastener is locked at the perfect pressure.

| **TURBOFLEX Glass clamping tool**

For clamping and aligning the glass panels accurately.



### OPTIONAL ADD-ONS:

| **Height adjuster**

Ideal for precise vertical alignment in trickier installs or uneven surfaces.

| **Horseshoe**

A practical tool for fast, precise positioning of aluminium profiles on concrete for optimal glass-profile alignment.

---

# HOW TURBOFLEX WORKS: **STEP BY STEP.**

Now that you've got everything you need, let's walk through the installation process, step by step. Whether it's your first time or your fiftieth, this guide keeps things clear, quick, and foolproof.

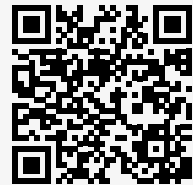
## CHOOSE YOUR MOUNTING TYPE



**TF-6620**  
for top-mounted applications



**TF-6621**  
for side-mounted applications



Mounting video

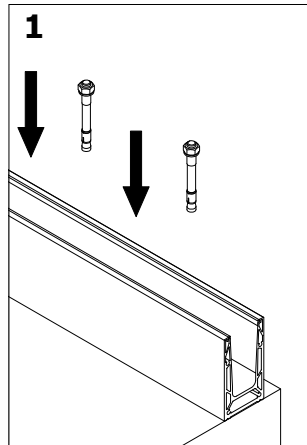


Download  
the mounting  
instructions

## STANDARD INSTALLATION – TOP MOUNT

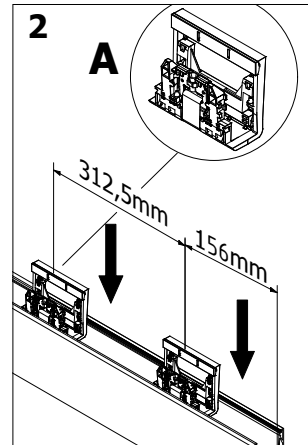
### 1. Set the base profile

Mount the TF-6620 to concrete or steel using standard anchors. Profiles feature drainage slots and extension pin channels for rapid alignment.



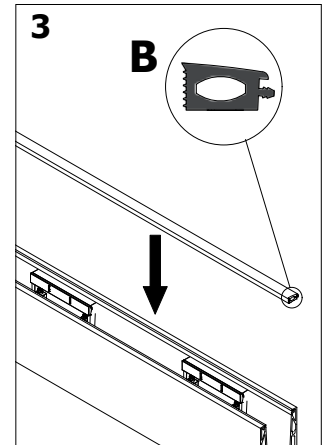
### 2. Place the TURBOFLEX bottom part

Position it securely within the glass profile.



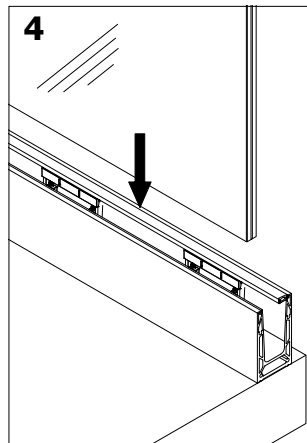
### 3. Insert the glass rubber

Place it on the fall side to ensure proper sealing.



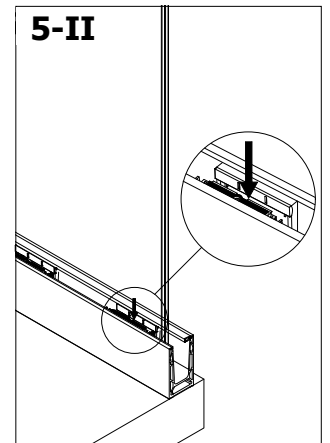
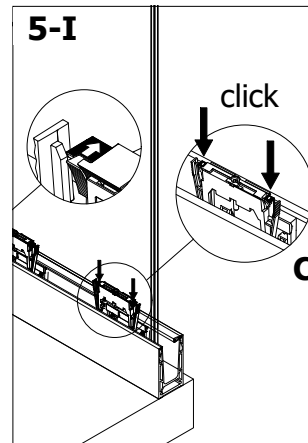
### 4. Position the glass

Drop the glass into the profile, no temporary props or shims needed thanks to the intelligent clamping system.



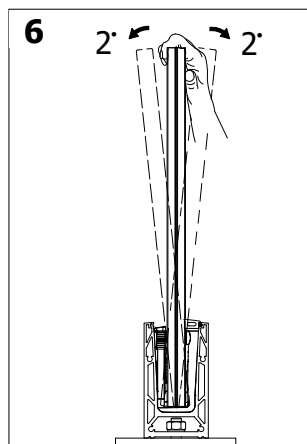
### 5. Insert the TURBOFLEX top part

Prepare for final locking.



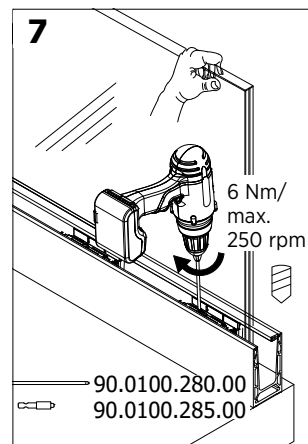
### 6. Manual glass alignment

Adjust the angle by hand; the TURBOFLEX system follows the glass position, ensuring horizontal accuracy instantly.



### 7. Lock into place

Secure with the supplied 6 Nm torque tool. The fixing adapts automatically to glass angles and tolerances.



*"The torque adapter may become hot during use. Tighten the screw until the tool begins to slip—this corresponds to 6 Nm (newton meters). Stop tightening at this point."*



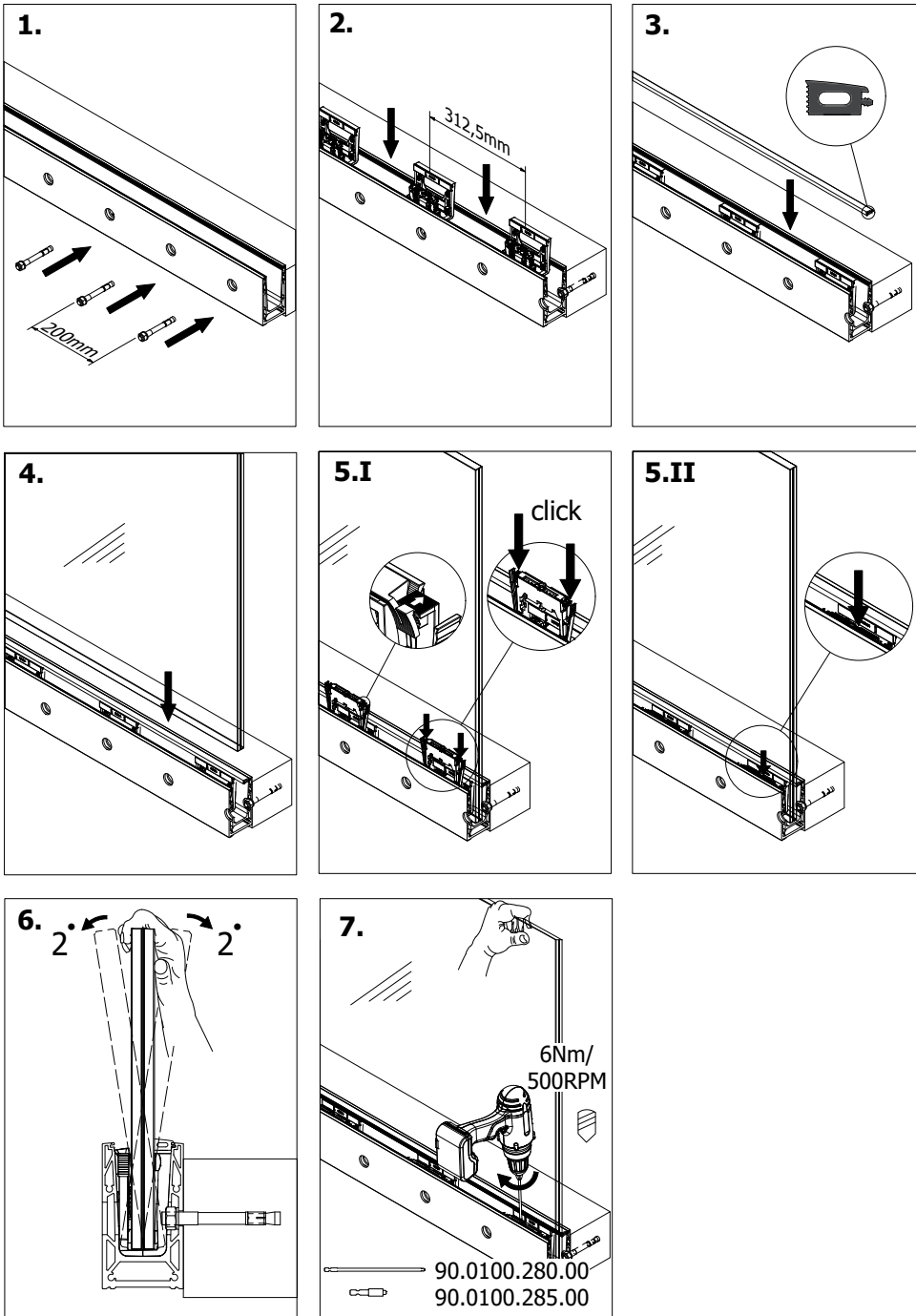
**Niels Wildschut**  
Sales Manager

TORQUETURBOTOOl for  
**TURBOFLEX**



# STANDARD INSTALLATION – SIDE MOUNT

Download  
the mounting  
instructions



## 1. Set the base profile

Mount the TF-6621 to concrete or steel using standard anchors. Profiles feature drainage slots and extension pin channels for rapid alignment.

## 2. Place the TURBOFLEX bottom part

Position it securely within the glass profile.

## 3. Insert the glass rubber

Place it on the fall side to ensure proper sealing.

## 4. Position the glass

Drop the glass into the profile, no temporary props or shims needed thanks to the intelligent clamping system.

## 5. Insert the TURBOFLEX top part

Prepare for final locking.

## 6. Manual glass alignment

Adjust the angle by hand; the TURBOFLEX system follows the glass position, ensuring horizontal accuracy instantly.

## 7. Lock into place

Secure with the supplied 6 Nm torque tool. The fixing adapts automatically to glass angles and tolerances.

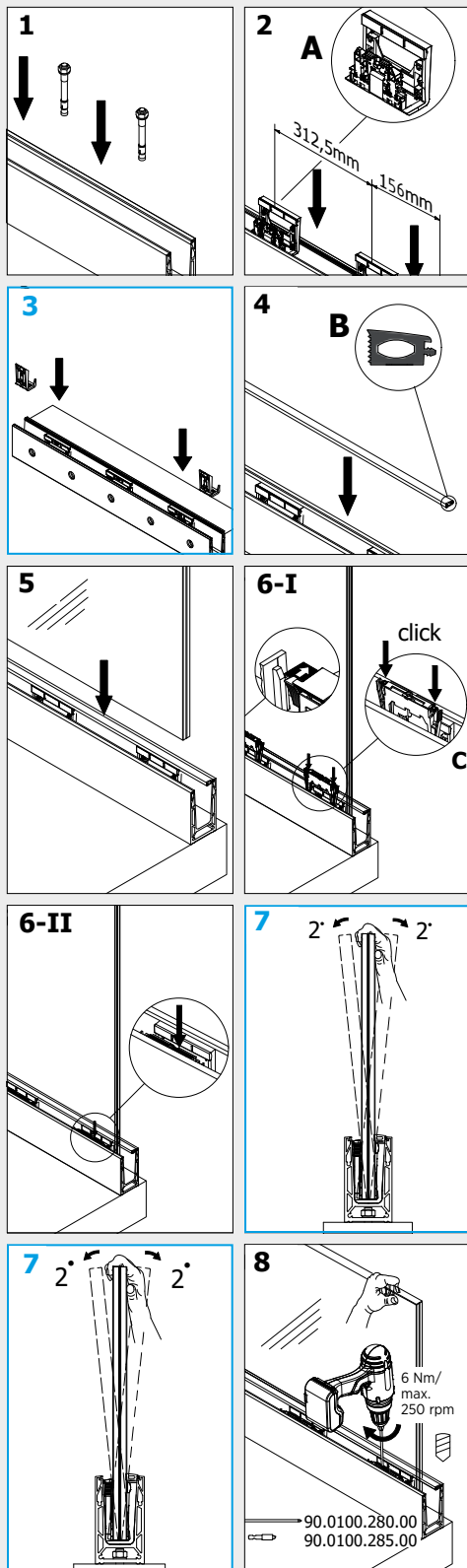


Download the mounting instructions

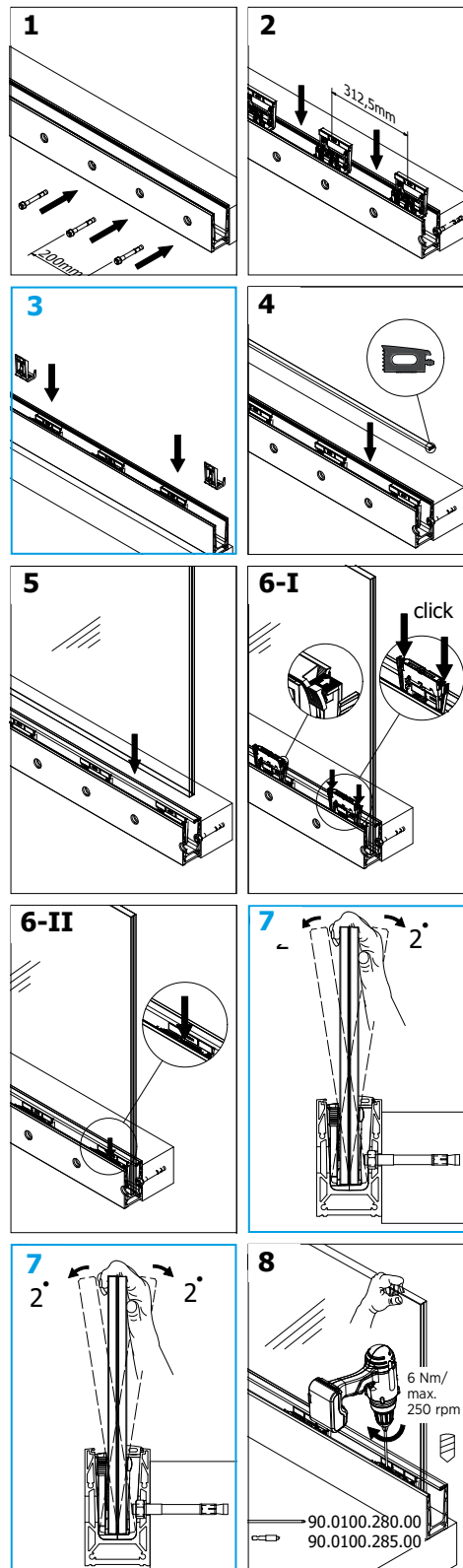
# INSTALLATION WITH HEIGHT ADJUSTMENT - TOP / SIDE MOUNT

Optional height adjustment:  $\pm 3$  mm

## TOP MOUNT



## SIDE MOUNT



### 1. Set the base profile

Mount the TF-6620 or TF-6621 to concrete or steel using standard anchors. Profiles feature drainage slots and extension pin channels for rapid alignment.

### 2. Place the TURBOFLEX bottom part

Position it securely within the glass profile.

### 3. Add height adjusters

to each bottom corner of the glass panel.

### 4. Insert the glass rubber

Place it on the fall side to ensure proper sealing.

### 5. Position the glass

Drop the glass into the profile, no temporary props or shims needed thanks to the intelligent clamping system.

### 6. Insert the TURBOFLEX top part

Prepare for final locking.

### 7. Fine-tune vertical alignment

using the adjusters for precise positioning ( $\pm 3$  mm).

### 8. Manual glass alignment

Adjust the angle by hand; the TURBOFLEX system follows the glass position, ensuring horizontal accuracy instantly.

### 9. Lock into place

Secure with the supplied 6 Nm torque tool. The fixing adapts automatically to glass angles and tolerances.

## WHAT MAKES TURBOFLEX SO FAST?

**Built as a plug-and-play system, TURBOFLEX lets you focus on precision rather than corrections. There's no fiddling with shim plates or returning to re-adjust misaligned panes. Because the glass is aligned directly at the point of installation, you're not going back to fix it later.**

### INSTALLERS LOVE IT BECAUSE IT:

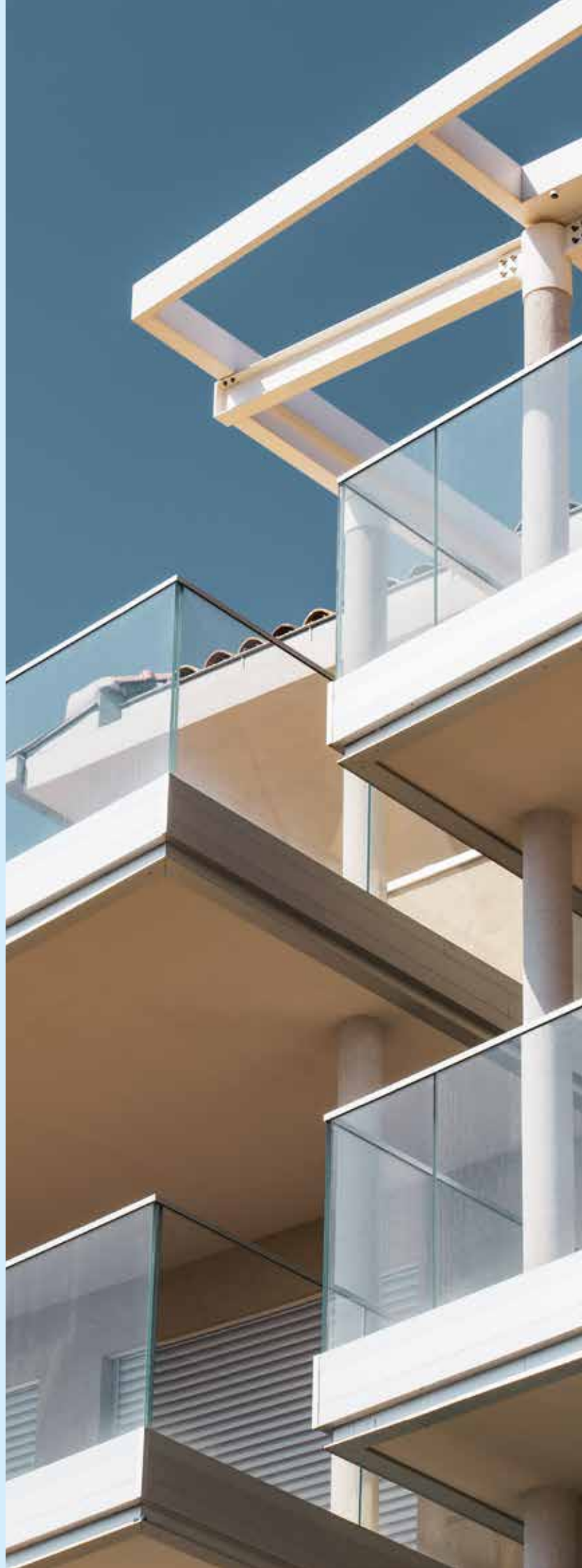
- | **Eliminates callbacks.** Once it's in, it stays in.
- | **Requires no special training.** Any qualified installer can work with it on day one.
- | **Reduces risk of errors.** You adjust the glass directly: no guesswork, no afterthoughts.
- | **Works everywhere.** From rooftop terraces to winding staircases, TURBOFLEX adapts without compromise.

For the seasoned metalworker who values speed and precision, or the independent handyman who wants to get the job done once and move on, TURBOFLEX delivers both.

## TURBOFLEX INSTALLATION RESULTS: ALIGNED AND SECURE RAILING

**The system is engineered so that the moment you fix the glass, it stays fixed. At the heart of this performance is ONLEVEL's patented clamping mechanism. Unlike traditional systems that rely on point pressure, which can stress or even damage the glass, TURBOFLEX offers full-surface contact. This ensures stability across the entire pane, at any angle. The stainless-steel fixing components grip the glass gently but firmly, using contact areas to eliminate pressure points and tension hotspots.**

It doesn't matter whether you're installing on a straight balcony or a sloped staircase. TURBOFLEX adapts. The mounting points follow the position of the glass itself, making perfect alignment not just possible, but automatic.



## 3. WHAT MAKES TURBOFLEX DIFFERENT FROM TRADITIONAL GLASS RAILING SYSTEMS

In the world of glass balustrades, not all systems are created equal. Traditional solutions often demand time-consuming adjustments, multiple tools, and constant fine-tuning to achieve the right alignment. TURBOFLEX was engineered to change that equation. The following nine facts showcase exactly how TURBOFLEX sets itself apart.

### 9 Facts about TURBOFLEX: How it's faster and safer than other glass railing systems

---

#### 1. DIRECT AT GLASS ADJUSTMENT: FASTER, CLEANER INSTALL

Most systems force you to adjust from the base or wedge the glass from both sides, requiring trial-and-error tweaking. TURBOFLEX flips that. The adjustment happens **directly at the glass panel**, meaning:

- | Less fiddling with base parts
- | More accurate alignment from the start
- | Faster first-time-right results

**For installers, that means you don't need to touch the base again after placing the glass, the fixing follows the glass, not the other way around**

---

#### 2. DONE IN 3 MINUTES

With the TURBOFLEX system, glass panels can be installed in 3 minutes. The design optimizes every phase of the glass installation process, turning time-consuming complexity into rapid execution. Here's how:

- | **No post-install glass correction:** Once aligned, it stays aligned. No revisits, no rework.
- | **User-side adjustment:** Everything happens from the safe side of the railing, no scaffolding, no acrobatics.
- | **Minimal rework:** Fewer tools, fewer mistakes, faster finish.
- | **Certified torque tool:** One key element that sets TURBOFLEX apart.

---

#### 3. ONLY ONE TOOL NEEDED

Every TURBOFLEX system is tightened using a dedicated **6Nm torque tool**, designed to ensure **precise, certified tightening** of the fixing screws. Unlike conventional systems, TURBOFLEX eliminates ambiguity by standardizing the torque applied:

- | Guarantees each fastening complies with **TURBOFLEX certifications**
- | Ensures every installer achieves **consistent, reliable performance**
- | Reduces variability and potential installation faults
- | Reinforces peace of mind on-site: especially for high-traffic or high-risk applications

This seemingly small tool delivers **big confidence**, ensuring the job gets done right the first time.

**For metalworkers with a tight schedule of contractors juggling multiple trades, this precision-first approach translates to more meters installed per day, and more projects completed on time.**

---

#### 4. IT AUTOMATICALLY HANDLES GLASS TOLERANCES

Tolerances in the production of laminated glass add up quickly. Each layer has its own tolerance, especially the interlayer in laminated glass adds to the total thickness tolerance. These tolerances cause difficulties, in many situations, in the mounting and adjustment of the glass panels.

TURBOFLEX is designed to compensate for the tolerances **in glass thickness**, absorbing these tolerances smoothly with its full-surface clamping system.

No gaps. No stress fractures. Just a snug, reliable fit.

---

#### 5. INSTALLATION FROM USER-SIDE

TURBOFLEX is designed for complete user-side installation, meaning the entire process takes place from the safe side of the railing.

This means:

- | No scaffolding.
- | No leaning over balconies.
- | No elevated risk.

This makes TURBOFLEX an ideal solution for **high-rise façades, narrow stairwells**, and other limited-access job sites where external access is difficult or dangerous.

---

#### 6. IT'S FULLY PLANNABLE

TURBOFLEX is designed to support accurate project planning by reducing the variables typically encountered during installation:

- | Installation time can be estimated with a high degree of confidence
- | Factory-set tolerances help minimize on-site adjustments
- | Predictable workflows support more consistent costing

**For contractors and project managers, this translates into better schedule control and fewer unexpected delays.**

---

#### 7. OPTIONAL HEIGHT ADJUSTMENT (±3MM OPTIONAL)

Even with perfect planning, site conditions vary. Uneven substrates or stair runs can throw off alignments, unless you have **built-in height adjustability**.

TURBOFLEX's optional height adjuster lets you shift the pane **±3 mm vertically on each corner**, allowing for razor-sharp spacing between glass panels across multiple panels without custom shimming.

---

#### 8. PREMIUM MATERIALS = PREMIUM SAFETY

TURBOFLEX is fast and safe. Using premium quality materials and German design.

- | Uses stainless steel fixing components
- | Using glass reinforced plastic components
- | Engineered to withstand 1.0 kN loads
- | Fully certified to meet EU regulations

**For professionals who can't afford callbacks or liability issues, this is non-negotiable peace of mind.**

---

#### 9. FULL-SURFACE CLAMPING FOR LONG-TERM DURABILITY

Many systems clamp glass at isolated contact lines, which leads to stress spikes. TURBOFLEX ensures **full-surface pressure** that matches the glass angle, even if it's not perfectly vertical.

The result? No stress lines. No long-term weakening. **Just strength, spread evenly.**

*"Finishing faster means better profitability and more projects overall. It's reassuring, everything is well controlled. The installation is smooth for both the installer and the client, who can even follow the process in real-time."*



## 4. IS TURBOFLEX CERTIFIED?

**TURBOFLEX has achieved European Safety Certification, successfully passing rigorous real-world test scenarios. Engineered for confidence, it is officially certified for applications up to 1.0 kN/m line load, the benchmark standard for residential and light commercial glass balustrades across Europe.**

Its versatility is one of its strongest assets. TURBOFLEX integrates seamlessly with **concrete, steel, and timber substrates**, making it adaptable to diverse architectural environments, without compromising performance. The system is designed to accept **glass thicknesses from 16.76 to 21.52 mm**, including industry-recognized European-approved compositions such as **10/10/4 laminated glass**.

What truly sets TURBOFLEX apart is its **full-surface glass clamping technology**. Unlike conventional systems, the contact surfaces follow the natural angle of the glass, eliminating stress concentrations. This ensures optimal load distribution and sustained functionality, even under demanding high-load conditions.

*"If you look at the anchors, you immediately see the difference between having a certificate and being truly certified."*

By combining safety certification, broad compatibility, and innovation in clamping design, TURBOFLEX represents a forward-looking solution that balances architectural freedom with uncompromised safety assurance.

*"Whenever you receive the structural calculation package for a railing system, ensure that all pages are fully included and consecutive. Incomplete documentation is typically considered invalid and is often rejected during the structural review process."*



**Marco Bleffert**  
Field Sales

## COUNTRY-SPECIFIC TESTING AND CERTIFICATION PROOF

For quick approval, TURBOFLEX has full test reports, static calculations, and certifications for:

### GERMANY

| General Building Approval (AbP) for TF-6620 and TF-6621.  
| Static calculations for both TF-6620 and TF-6621.

### FRANCE

| Mechanical resistance reports for TF-6620 with glass compositions (8.8.4, 8.8.2 tempered HST PVB/EVA).

### UNITED KINGDOM

| Load tests for TF-6620 and TF-6621 under BS 6180:2011.

### NETHERLANDS

| Static calculations for both TF-6620 and TF-6621.

## HOW TO ACCESS TURBOFLEX CERTIFICATION DOCUMENTS

### Getting the documents is simple:

- 1 Visit our webshop at [www.onlevel-shop.com](http://www.onlevel-shop.com).
- 2 From the main menu, open **Categories**
- 3 Then navigate to **Balustrade** and select **Glass Balustrade | TURBOFLEX**.
- 4 Choose the specific item you require (for example, TURBOFLEX 1.0kN/1.5kN)
- 5 Click the **Certifications** tab.
- 6 Download the exact static calculations, load tests, and approvals you need.

Installation guidelines with certification references are also available in the same section, so you can send a complete package for approval in minutes.



**TESTED**  
according to  
**BS6180**

Résistance mécanique sur  
garde-corps Model: 6620 - 8/8/4  
feuilleté trempé HST PVB

Structural calculation  
Model: 6620

Résistance mécanique sur  
garde-corps Model: 6620 - 8/8/2  
Trepné HST EVA

Structural calculation  
Model: 6621

Résistance mécanique sur  
garde-corps Model: 6620 - 8/8/2

---

## 5. TURBOFLEX VS FLEX-FIT

**TURBOFLEX and Flex-Fit are both ONLEVEL innovations, created with the same purpose in mind: to make glass balustrade installation faster, easier, and more reliable. While they share this mission, each system takes a distinct approach to alignment.**

**Flex-Fit uses a wedge-based system for vertical alignment.**

Installers insert Flex-Fit wedges into the base profile and fine-tune the glass using a supplied adjustment tool. Even after installation, vertical tilt can still be corrected without demounting the glass.

**TURBOFLEX, on the other hand, eliminates wedges altogether.**

It allows the installer to make adjustments by hand, directly at the glass panel, with only the torque wrench tool 6N/m. This system simplifies the entire process and is especially useful in tight or elevated spaces.

### WHICH SYSTEM INSTALLS FASTER?

Flex-Fit performs on par with other systems in the market, but **TURBOFLEX remains the fastest overall.**

With Flex-Fit, all work can be completed from the inside, no scaffolding is required. The design allows for **glass adjustment of up to 34 mm**, giving installers considerable flexibility.

However, in most cases, **some precision work and minor alignment adjustments** may still be required after installation.

TURBOFLEX enables installation at higher speed compared to conventional solutions by **removing the need for wedges, special tools, and most post-install corrections.** Glass adjustment is carried out directly on the panel itself, with the wedge following the glass automatically. The wedge is secured with a single screw at 6 Nm torque, minimizing trial-and-error during positioning and reducing the need for later adjustments.

**Most importantly:**

**TURBOFLEX does not require any adjustment after installation.**

### WHICH SYSTEM OFFERS MORE PRECISION?

Flex-Fit offers horizontal alignment of 1.0° to both sides. This gives solid control for aligning the glass panel angle during installation.

**TURBOFLEX offers both horizontal and vertical adjustment**

including built-in tolerance absorption. You can adjust the glass angle **2°** in both directions. The optional glass height adjustment allows for a vertical correction of  $\pm 3$  mm at each corner of the glass, ensuring a perfectly parallel gap between panels.

### WHICH SYSTEM IS MORE PREDICTABLE TO PLAN?

When it comes to **planning accuracy**, **TURBOFLEX** sets a higher standard. Its engineering is designed to **minimize on-site variability** by reducing reliance on adjustment components and tolerances. This translates into:

- | **Accurate installation estimates** with high confidence
- | **Built-in adjustability**, eliminating post installation corrections
- | **Predictable workflows**, ensuring consistent costing

For contractors and project managers, this means **better schedule control, clear budgeting, and no unexpected delays.** With TURBOFLEX, you can truly plan ahead. Its **intuitive hand adjustment** makes installation both **precise and efficient.**

By contrast, **Flex-Fit**, like many other systems on the market, has less accuracy when it comes to **planning**. Because alignment does not occur directly on the glass and not the complete range of glass thickness tolerances can be compensated, each adjustment requires multiple attempts. The result is:

- | More **subsequent corrections**
- | **Extended working times**
- | **Slower, less predictable installations**

Unforeseen site conditions, such as uneven floors or technical complications, further increase the risk of **schedule disruptions and cost overruns.** If accurate planning is of importance to your project, Turbflex is the best choice.

## IS THERE A COST DIFFERENCE?

Flex-Fit may be more affordable in terms of materials, but requires more installer time, which adds up over multiple jobs.

While TURBOFLEX may have a higher **upfront hardware cost**, the **labor savings** often outweigh that. By cutting install time and removing adjustment errors, TURBOFLEX reduces total job cost especially for large or complex projects.

### In short:

- | **Flex-Fit = Lower materials cost, higher labor time**
- | **TURBOFLEX = Higher materials cost, lower labor time**

Want to know how much you could save on your next project? Ask our sales team for the TURBOFLEX Moneysaver Configurator and see the difference for yourself.

As of February 2026, the pricing is as follows: Flex-Fit 1.0 kN, with the kit of 5 mtr length, is available at € 187,35, while TURBOFLEX 1.0 kN, with the kit of 5 mtr length, is priced at € 208,30.



TURBOFLEX



## SIDE-BY-SIDE TECHNICAL SPECIFICATIONS

Feature	Flex-Fit	TURBOFLEX
<b>System Type</b>	Wedge-based system for vertical alignment	Wedge-free system with direct glass adjustment
<b>Glass Thickness range</b>	12 - 31,52 mm	16.76–21.52 mm
<b>Max Glass Height</b>	Up to 1200	Up to 1200
<b>Glass adjustability angle</b>	+/- 1°	+/- 2°
<b>Glass Fixation Adjusts to Glass Position</b>	No	Yes
<b>Automatic Return to Start Position During demounting</b>	No	Yes
<b>Water Drainage</b>	Yes	Yes
<b>Maximum Line Load</b>	Up to 3kN	1.0 kN
<b>Price</b>	€ 187.35	€ 208.30

---

## 6. WHEN IS TURBOFLEX **NOT THE BEST FIT** FOR YOUR PROJECT?

**Choosing the right solution is never just about what a product can do. It's also about knowing where it might not be the best fit. TURBOFLEX offers powerful capabilities that can drive efficiency and innovation, but like any investment, it's not a one-size-fits-all answer.**

This guide is designed to help you make a smarter buying decision by highlighting five specific situations where TURBOFLEX may not deliver the value you expect. By understanding these boundaries, you'll be better equipped to evaluate whether TURBOFLEX truly aligns with your business goals.

### 1. TURBOFLEX doesn't support glass outside 16.76–21.52 mm

TURBOFLEX is optimized for a standard range of **glass thicknesses between 16.76 mm and 21.52 mm**. If your project requires **laminated or toughened glass beyond this range** (e.g., 25.52 mm, 12 mm monolithic), the system's internal gaskets and clamps may not provide secure fixation or may require aftermarket adjustments.

Although you can compensate with custom gaskets, this adds manual work and undermines TURBOFLEX's core benefit: **plug & play simplicity**.

**Alternative:** Choose ONLEVEL profiles that are compatible with our Flex-Fit range or contact engineering for support.

### 2. TURBOFLEX is overkill for fully recessed floor installations

Fully recessed floors don't demand the structural strength or features of TURBOFLEX. In these cases, using TURBOFLEX may mean overpaying for capabilities you don't need.

**Alternative:** Choose ONLEVEL TL-1010 for efficient, code-compliant recessed applications.

### 3. TURBOFLEX may not fit budget-driven projects

TURBOFLEX saves money by saving time, but **if your labor is cheap and timelines flexible, the upfront cost may not make sense**.

**Alternative:** Simpler glass balustrade systems like TL-6080, basic glass clamps, or post systems deliver good results at lower profile costs.

### 4. TURBOFLEX doesn't work with curved glass

TURBOFLEX is designed for straight-line runs and isn't adaptable to curved balustrade applications. Attempting to modify it can lead to performance or safety issues.

**Alternative:** Use the ONLEVEL Bend-Fit system, designed specifically for curved glass installations.

### 5. TURBOFLEX with TF-6620 profile should not be installed on wood

(unless additional structural reinforcement is recommended by a building engineer)

**TURBOFLEX with TF-6620 profile, like all the other U-profiles, is not certified or recommended for use on wood or other lightweight substrates** like CLT (cross-laminated timber) or hollow-core slabs.

The only TURBOFLEX configuration approved for timber applications is the **side-mount TF-6621**.

TURBOFLEX requires **high pull-out strength**, which **timber and light substrates can't reliably provide**. Installing it on wood risks:

- | Structural failure
- | Inspection issues
- | Voiding warranties
- | Additional manual reinforcement (which defeats TURBOFLEX's plug-and-play advantage)

**Alternative:** Choose TF-3620 or TL-3010 (top mount). You can use **RAMPA** inserts or threaded rod with base plate.

---

# 7. WHEN IS TURBOFLEX THE RIGHT FIT FOR YOUR PROJECT?

If you're considering TURBOFLEX, you're probably asking yourself the critical question: **Is it the right fit for my project? The truth is, TURBOFLEX isn't a one-size-fits-all system and that's exactly why it delivers such powerful results in the right scenarios.**

Here are six situations where TURBOFLEX isn't just "ok", it's the smart choice:

## 1. Tight timelines make TURBOFLEX the clear choice

When deadlines are tight and labor costs are high, TURBOFLEX enables glass panels to be installed in just three minutes.

### Why it's so fast:

- | Glass alignment is being done by hand on the glass
- | No post-installation alignment needed
- |  $\pm 3$  mm height adjustment directly at the glass
- | One-side installation (no scaffolding)

**Ideal for:** Hotels (guest rooms, balconies, internal corridors), private residences, large private homes, office interiors, wellness areas, and other light pedestrian traffic environments.

## 2. When glass tolerances vary between panels

Uneven glass panel sizes can slow you down and lead to costly rework. TURBOFLEX's integrated clamping adapts to production tolerances without custom gaskets or grinding.

**How it works:** The fixing follows the actual glass position, ensuring full gasket contact and a precise, secure finish.

## 3. When exterior access is limited or unsafe

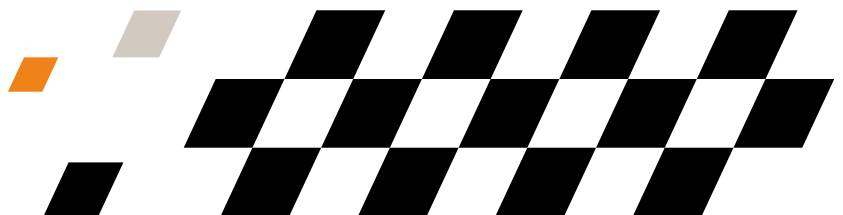
Balconies, high-rise edges, and mezzanines often have restricted exterior access.

**How it works:** TURBOFLEX is installed entirely from the user side, simplifying the work and reducing overall site risk.

**Transition:** And if access isn't your challenge, your substrate conditions might be the deciding factor.

## 4. When your substrate is concrete or steel in good condition

TURBOFLEX is purpose-built for both top-mount (TF-6620) and side-mount (TF-6621) installations directly onto structural concrete or steel. Its robust anchoring system delivers high pull-out resistance, ensuring reliable performance even under significant loads. This makes it an ideal solution for commercial or residential projects where the substrate is structurally sound, and you want to avoid time-consuming reinforcement or special preparation steps.



## 5. When certified safety is non-negotiable

TURBOFLEX has been engineered and tested to meet the rigorous 1.0 kN line load requirements in accordance with European safety standards. With full documentation and verified performance data, it's perfectly suited for projects where compliance is critical: such as public buildings, balconies, or stairways.

## 6. When you need predictable, repeatable results

Whether you're scaling operations or onboarding new installation teams, TURBOFLEX simplifies the process with its intuitive, glass-first adjustment method. Installers can align and secure glass panels directly at the point of contact: no trial and error, no rework. This results in a consistently high-quality finish across multiple jobs, making it perfect for companies seeking process efficiency and reduced margin for error.

Whether you're scaling up your installation business or onboarding a new team of fitters, TURBOFLEX ensures that every project follows the same reliable process. By standardising each step, it eliminates the need for on-site improvisation! This means: faster installs, fewer errors, and a lower risk of rework, or customer call-backs. It's efficiency you can count on, job after job.

## OPTIONAL ADD-ON:

### | Mounting console

For insulation, recessed surfaces, when spacing is required, also for water evacuation purposes. Robust brackets for mounting glass railing profiles with a fixed offset (110–150 mm) from the surface. Made of zinc-plated steel for corrosion resistance, it's ideal for insulated façades, recessed surfaces, or when spacing is required, also for water evacuation purposes. Quick to install and compatible with top- and side-mounted systems.



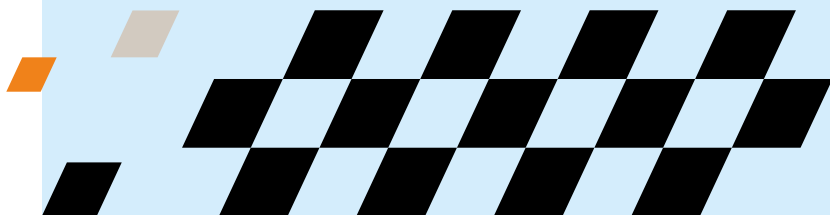
Mounting console

## THE TURBOFLEX SWEET SPOT

When it comes to glass balustrade installations, speed, precision, and safety are key. TURBOFLEX has been designed to hit the sweet spot. It combines fast and plannable installation, smart adjustment, and certified reliability.

### Choose TURBOFLEX when you want:

- | **Fast installation**  
without compromising on accuracy.
- | **Simplified adjustment**  
directly at the glass, not at the base profile.
- | **Precision fixing**  
with a torque wrench at 6N/m.
- | **Certified safety**  
for both concrete and steel applications.
- | **One-side installation**  
for safer, lower-cost worksites.
- | **Reduced delays, rework, and call-backs**  
for a leaner project lifecycle.



---

## 8. WHY INSTALLERS ARE SWITCHING TO TURBOFLEX

**Still spending hours realigning glass after installation? You're not the only one. If every project feels like a constant struggle with tolerances, shimming, or post-install fixes, you know how quickly that drains your time and margin. Especially under pressure from site managers or clients.**

This guide is built on the real frustrations of installers just like you. That feedback led to a new kind of system. One that adapts to the glass instead of forcing the glass to adapt to it.

### SOME TRADITIONAL GLASS RAILING SYSTEMS CAN WASTE YOUR TIME AND MARGIN

If you've ever said or thought one of these, you're not alone:  
| "Why do I always need to shim or adjust glass after install?"  
| "Why can't we plan the installation with accuracy?"  
| "We lost hours because the glass mounting wasn't forgiving."

These issues typically stem from **traditional clamp-style base channels** that require:

- | Multiple correction steps
- | Backside access for tightening
- | Improvised workarounds to absorb glass tolerances

*The result? You lose time, precision, and margin.*

## HOW TURBOFLEX SOLVES THE BIGGEST GLASS RAILING PAIN POINTS

**TURBOFLEX was designed with a different mindset:**  
*"Let the system adapt to the glass position, not the other way around"*

As the team behind TURBOFLEX, **ONLEVEL developed this system based on direct feedback from thousands of installers.** We've benchmarked it against every major competitor in real-world conditions. The performance gains are proven on-site.

**With TURBOFLEX, you:**

- | Adjust the glass itself
- | Avoid post-install corrections
- | Use just one simple tool: the torque tool (with extension)
- | Mount and align from the user-facing side only, no scaffolding required
- | Snap components into place with pre-mounted fixings
- | Fixing only with one screw

**It's faster, safer, and engineered to work the way installers like to work, precise and fast.**

## IS TURBOFLEX REALLY FASTER?

Yes! And we've got the data to back it up.

In benchmark testing across multiple job sites:

- | **Standard clamp-based systems** installation times vary widely because clamps depend on alignment, manual adjustment, and individual installer skill. That makes it **impossible to guarantee a fixed time per panel.**
- | **TURBOFLEX changes that.** Every panel averages just **3 minutes**, and those minutes add up to major time savings across an entire project.

And since you're working from the safe side:

- | No scaffolding = reduced cost and liability
- | Smaller crew needed
- | Less equipment = more profit and flexibility

## PRECISION THAT PAYS OFF

TURBOFLEX delivers full control: both vertically and horizontally.

- | No stress points on the glass
- | Built-in tolerance absorption for glass thicknesses from 16.76 to 21.52mm
- | Rigid alignment maintained even under high loads

The rubber seals follow the angle of the glass, meaning you get:

- | Seamless visual transitions
- | No gaps
- | No awkward field fixes

It's fully **plannable for project managers** and engineered to be **easy for installers** to use. This means you can precisely estimate installation time and plan the rest of the day more efficiently. As one of our client says:

*“Thanks to TURBOFLEX, what normally takes an entire afternoon took just 15 minutes. Instead of wasting hours installing glass, we were already back at the office.”*



And with no rework or adjustments needed, the job is truly done the first time.

*“In installation, time is money and efficiency protects your margin”*



**Manuel Zant**  
Field Sales

## BUT I'M USED TO MY CURRENT SYSTEM... WHY SHOULD I CHANGE?

**You might be thinking:**

*“I've got my process dialed in with my current railing system, or another system. Why switch?”*

Fair question. We get it. What's familiar is what we tend to stick to.

But here's the reality regarding glass balustrade systems:

- | **Familiar ≠ Efficient**
- | Every minute saved per install = higher margin
- | Every avoided rework = a happier client
- | Every faster quote = one more job won

**You don't have to change everything.**

But you do owe it to your bottom line, and your team, to know when there's a smarter tool for the job.

## WONDERING HOW TO SPEED UP BOTH YOUR JOB-SITE WORKFLOW AND YOUR PROJECT PLANNING?

ONLEVEL Studio is built for exactly that. It eliminates guesswork, ensures you always select the correct components, and streamlines every step from concept to order.

**And here's what sets it apart from anything else on the market:**

- | It's the only configurator that lets you download your drawing instantly.
- | It's fully integrated with our webshop, so you can order in one click.

From first idea to final order, it's simply smart planning for glass-railing experts who can't afford inefficiency.



**TURBOFLEX  
STUDIO**

---

## 9. TURBOFLEX DELIVERY TIME & PICKUP OPTIONS

**When it comes to getting your TURBOFLEX system, speed and clarity matter. In this section, you'll see exactly how to pick it up in person, often the fastest route if you're nearby. You'll also get a transparent overview of delivery costs, timelines, and logistics for your country, so you can plan ahead with zero guesswork. Finally, we'll cover the key factors that could delay your order and how to avoid them.**

### OPTION 1: FREE TURBOFLEX PICKUP IN EMMERICH (SAME DAY OR NEXT DAY)

If you're nearby, the fastest way to get your TURBOFLEX system is to pick it up directly from our warehouse in Emmerich, Germany. TURBOFLEX profiles are 5 m long, so standard parcel couriers are not suitable. Collection of the profiles require a vehicle or transport service equipped to handle long lengths.

**Benefits of pickup:**

- | No transport fees will be charged. However, the buyer is responsible for arranging and covering their transportation costs.
- | Same-day collection for in-stock items is possible, depending on order time and warehouse workload.
- | Collection time frames are confirmed when you place your order.

**Best for:** Urgent projects, flexible teams, and customers who are willing to make the trip to Emmerich.

### OPTION 2: TURBOFLEX DELIVERY ACROSS EUROPE/INTERNATIONALLY

If you have TURBOFLEX delivered, our process uses trusted freight partners to ensure your system arrives quickly and safely.

**When you order in our webshop and add products to your cart, you'll instantly see:**

- | Exact transportation fees
- | Taxes calculated automatically
- | Delivery estimates based on your address

*No hidden costs, what you see at checkout is final.*

## NEED IT TOMORROW?

For urgent cases, we can arrange express delivery or same-day pickup, ideal for last-minute jobs or replacement parts. When placing your order online, simply include a note specifying your required delivery date. Our team will prioritize your order and make every effort to meet your timeline. Where necessary, we may explore expedited shipping options, which could incur additional costs for express transport.



## 10. WHAT DOES TURBOFLEX COST?

**TURBOFLEX is ONLEVEL's new Full Glass Balustrade system. When you see the price of a TURBOFLEX setup, you're primarily buying the fixation system itself, plus a few key supporting components.**

As of February 2026, **TURBOFLEX fixation sets at € 208.30 per 5-meter unit** (current promotional price on the ONLEVEL Shop). For our installer and dealer partners, special trade discounts are applied automatically once you are logged in with your partner account. This means you'll see the exclusive trade pricing directly in the webshop.

### *Here's what you're buying:*

Included:

- | TURBOFLEX fixation mechanism
- | Rubber gaskets (matched to your glass thickness)

### **Optional Accessories**

(Recommended for most Installers):

- | TURBOFLEX mounting tool
- | TURBOFLEX torque tool (6Nm)
- | TURBOFLEX height adjuster (1.0 kN)

### *Required to Complete the System:*

- | **Base Profile:** TF-6620 (top mount) or TF-6621(side mount)
- | **Glass Panels:** ONLEVEL does not supply glass, you'll need to source this separately from your glazier.

# WHY TURBOFLEX IS WORTH THE INVESTMENT

At € 208.30 per 5-meter unit (February 2026 price), TURBOFLEX delivers exceptional value, but the real return on investment goes far beyond the purchase price. Every detail is engineered to save time, reduce labour costs, and eliminate hidden inefficiencies on-site.

## 1. Faster installation

**Traditional glass railing systems can be slow, complex, and labour-intensive.**

**With TURBOFLEX, installation is streamlined:**

- | Panels lock securely with fewer steps.
- | No need for constant measuring or recalibration.
- | Spending less time on site means you can deliver projects faster, secure more business throughout the year, and maximize revenue opportunities.
- | For larger projects that require several days or even weeks to mount, installation can now be completed in significantly fewer mounting days. This not only reduces costs by cutting down on mounting hours, but also unlocks additional savings through fewer site visits and, in some cases, reduced accommodation expenses.

## 2. Effortless alignment:

**Precision without the hassle**

**Every millimetre matters when working with glass. TURBOFLEX allows installers to:**

- | Adjust and fine-tune the panel positioning with ease.
- | Eliminate the trial-and-error process common in traditional systems.
- | Ensure a flawless finish the first time, without expensive rework.

## 3. Plug & play simplicity:

**Anyone can do it**

**The system is designed for ease of use, not just by experienced installers, but also by assistants and apprentices:**

- | Straightforward mounting means even non-specialists can handle key steps.
- | Teams can optimize labor costs by balancing skilled professionals with lower-cost support staff.
- | Fewer steps also mean fewer mistakes, minimizing risks and delays.

## 4. Certified german engineering:

**Safety you can trust**

**TURBOFLEX isn't just fast and simple, it's proven:**

- | **Tested and certified** to meet stringent international safety standards.
- | Engineered in Germany, ensuring durability, reliability, and peace of mind.
- | Designed to perform consistently across projects of every size.

## 5. Ongoing support:

**You're never on your own**

**Installation doesn't end with the product:**

- | Access to step-by-step **video tutorials** and resources.
- | Direct support from experienced engineers for troubleshooting.
- | Hands-on guidance to ensure every project runs smoothly.

---

## THE REAL COST OF A RAILING SYSTEM

Materials are only one part of the equation.

**The true cost comes from:**

- | Total man-hours on site.
- | Travel and accommodation for distant projects.
- | Rework and callbacks caused by misalignment or poor installation.

With TURBOFLEX, you cut hours, avoid rework, and deliver a clean, professional finish the first time.



## EXAMPLE COST ESTIMATE: 10-METRE BALCONY WITH TURBOFLEX

Here's a simple cost scenario to help you understand what a basic TURBOFLEX installation might look like for a 10-metre residential balcony:

Component	Description	Approx. Cost (€)
<b>TURBOFLEX fixation sets</b>	2 × 5m sets @ €208.30 each	416.60
<b>Mounting profile</b>	TF-6620 or TF-6621 (10m total) @766.- for 5 meters	1,532.00
<b>Tools</b>	Mounting Tool	5.00
	Torque Tool	76.80
	Glass clamping (1-time cost)	55.90
<b>Glass panels</b>	Not included	Varies by thickness, supplier
<b>Estimated Total (excluding glass and delivery costs)</b>		<b>€2,086.30</b>

Prices reflect current promotional offers as of February 2026. For the actual price please check [www.onlevel-shop.com](http://www.onlevel-shop.com).

Final cost may vary depending on finish type, complexity, or project-specific needs. **Pick-up from warehouse is FREE:**

You can collect your order directly from our warehouse at **Budberger Straße 5, 46446 Emmerich am Rhein.**



## 11. HOW TO ORDER TURBOFLEX

Purchasing TURBOFLEX has never been easier. You can place your order directly through the official ONLEVEL Webshop.

HERE'S A QUICK OVERVIEW OF HOW IT WORKS:



1



2



3



4

### Register or log in:

Create a free account on the ONLEVEL Webshop to access pricing, product availability, and technical details. For our installer and dealer partners, special trade discounts are applied automatically once you are logged in with your partner account. This means you'll see the exclusive trade pricing directly in the webshop.

### Find your product:

Search for "TURBOFLEX" or navigate: Glass Balustrade | TURBOFLEX

### Configure your system:

Select your desired products and accessories.

### Add to cart & checkout:

Choose your preferred delivery option. The final cost will appear after you select delivery. Complete your payment to finalize the order.

**Once checkout is complete, our team processes your order and gets everything moving.**

Watch the Tutorial



---

## WHAT'S INCLUDED WHEN ORDERING TURBOFLEX?

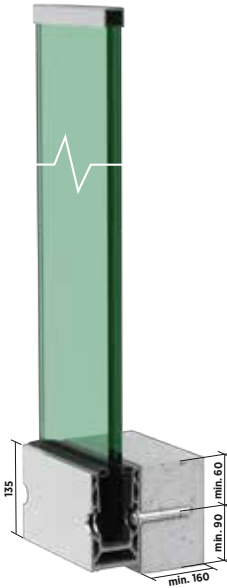
**TURBOFLEX is a modular system you configure based on your project's needs. Here's what you'll need to select:**

### Profile type (depending on mounting):



#### | **Top-mounted (TF-6620)**

- Pre-drilled
- Including drainage holes



#### | **Side-mounted (TF-6621)**

- Pre-drilled
- including drainage holes

### Finish:



#### | **Mill Finish:**

Available from stock



#### | **Natural Anodized:**

25-micron thickness, available from stock



#### | **RAL Powder-Coated:**

Matt, shiny, or textured finish, delivery within 2 weeks

## Glass thickness supported:



- | **16.76 mm** – Laminated toughened glass (8/8/2)
- | **17.52 mm** – Laminated toughened glass (8/8/4)  
*most common for private use*
- | **20.76 mm** – Laminated toughened glass (10/10/2)
- | **21.52 mm** – Laminated toughened glass (10/10/4)  
*most common for public use*

## Accessories:



- | **Glass Mounting Sets:** Including glass carrier/wedge + gaskets



- | **End Caps:** Left, right, stairs, and cover variants



- | **Horseshoe:**  
A practical tool for fast, precise positioning of aluminium profiles on concrete for optimal glass-profile alignment.



- | **Tools:** 6 Nm Torque tool + extender for efficient installation



- | **Corner Solutions:** Inside and outside corner connectors



- | **Handrail:** Aluminum or stainless steel, as well as the appropriate rubber gaskets



- | **Adjuster (Optional):** ±3 mm adjustability, 2 pcs per glass panel



- | **Spacer (Optional):** As an additional drainage solutions.

## Profile lengths:

- | Standard Options: 2.5 m and 5 m
- | Custom Cut-to-Size: Available upon request

## Not sure what to choose?

- Our team can guide you based on your project specs.  
E-mail us at [sales@onlevel.com](mailto:sales@onlevel.com)

---

## DOES TURBOFLEX INCLUDE GLASS?

**No. TURBOFLEX includes the hardware and accessories, but not the glass. However, ONLEVEL makes the glass process easy.**

**Here's what we provide:**

- | Glass specifications based on your system and use case (private, public, office or heavy public)
- | ONLEVEL Studio configurator makes glass drawings for your project!
- | Statics and certification for your glazier
- | Referrals to trusted glass suppliers, if you don't already have one you bring the glass, we'll make sure you know exactly what you need.

**YOU BRING THE GLASS,  
WE'LL MAKE SURE YOU KNOW  
EXACTLY WHAT YOU NEED.**





---

# OUR TEAM

## WE ARE ONLEVEL



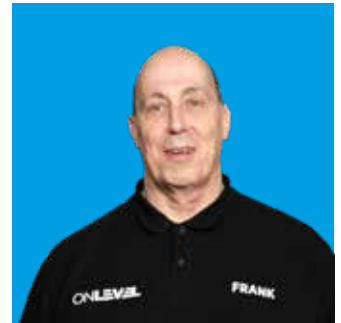
**Iwan Oude Luttikhuis**  
CEO ONLEVEL



**Niels Wildschut**  
Sales Manager



**Erwin Stegenga**  
Field Sales



**Frank Verhey**  
Engineering



**Nethmini Wanigasekera**  
Engineering



**Kasun Premalal**  
Quality Manager



**Jeroen Cheizoo**  
Warehouse Manager



**Sven Keuken**  
Warehouse



**Rudi Wittenhorst**  
Warehouse



**Erhan Taylan**  
Warehouse



**Ozan Taylan**  
Warehouse



**Sebastian Wittig**  
Purchase Manager



**Noelia Dominguez**  
Purchase



**Silvia Casaponsa Parerols**  
Accounting



**Thomas Gebbink**  
Accounting



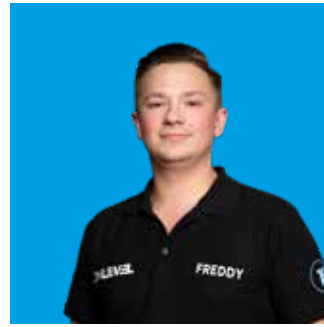
**Ria le Noble**  
Accounting



**Christophe Bardet**  
Field Sales



**Marco Bleffert**  
Field Sales



**Frederik Vennemann**  
Field Sales



**Manuel Zant**  
Field Sales



**Ulrike Bartsch**  
Internal Sales



**Jule Henkel**  
Internal Sales



**Chantal Siebeling**  
Internal Sales



**Giulia Galdo**  
Marketing

**ONLEVEL**

**ONLEVEL GmbH** | Budberger Straße 5 | 46446 Emmerich am Rhein | Germany  
+49 (0)2822 97514-0 | [info@onlevel.com](mailto:info@onlevel.com) | [www.onlevel.com](http://www.onlevel.com)